



CRIMPING MACHINE MEGOMAT 600

TYPICAL APPLICATIONS IN THE AUTOMOTIVE INDUSTRY

Megomat product family

Schäfer offers fully automatic crimping machines for high productivity and various applications.

On a modular platform different variants of machines were developed, to achieve maximum flexibility and meet customer specific requirements. Safety was the focus, by using actual machinery directives while also minimizing set-up times. Minimum machine downtimes, ergonomic design and the safety concept were the focus.





TYPICAL APPLICATIONS IN THE AUTOMOTIVE INDUSTRY

Processing in high quality

To ensure the product quality, Schäfer offers different optional extensions. The crimp force monitoring reliably evaluates the quality of crimp connections.

The wire quality monitoring system reports bad parts due to faulty stripping. The optical cable quality monitor checks produced cables.

Classification of the machine

Available are machine variants which include entry and standard models for specific industries also customer-specific models for advanced individual solutions.

The Megomat 600 crimping machine is a standard model and equipped to serve typical applications in the automotive industry. The machine allows crimping, sealing and tinning of wires in the cross-section range from 0.08 mm² to 6 mm².

The high-quality components and robust machine design provides highest product quality, maximum productivity and durability.

Specific machine configuration

From a wide range of options, various machine configurations are available to realize reproducible and complex cable operations. For further minimizing set-up times, the double wire straightener and applicator shuttle system are available.

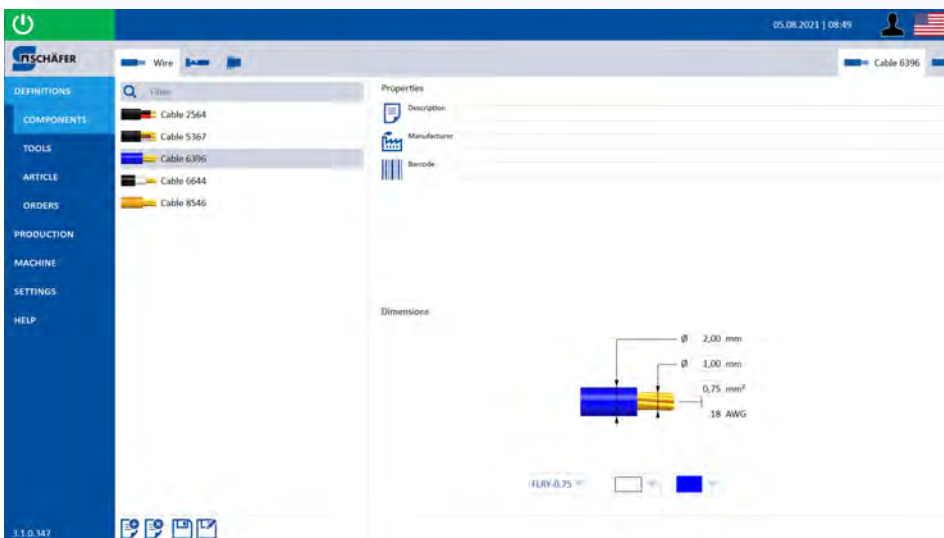


HMI SOFTWARE FOR WIRE PROCESSING MACHINES

Intuitive and safe operating concept

The WireStar HMI software supports optimum process sequences through its user-friendly operator interface and constant data availability from previous productions. Interaction via the modern user interface is done via a touchscreen and offers a safe handling of the machine.

WireStar's excellent networkability contributes to central process coordination and supports through extensive and configurable database management. The integrated networking with Schäfer Connect facilitates process coordination with the operator's planning system for resources (e.g. ERP). The dashboard can also be used to display status, production progress and material consumption independent of the installation location.



MACHINE EQUIPMENT

Base equipment

- Crimping station
- Base frame including control cabinet
- Station tables and operating desk
- Wire straightener and swivel arms
- Programmable wire feeder
- Programmable cut and strip module
- Blade assembly and bad part cutter
- Pneumatic machine guard
- PC with touch screen display
- Machine software WireStar
- Networking and interfacing functions

Optional extensions

- Seal module
- Tinning station
- Double wire straightener
- Crimp height adjustment
- Press height adjustment
- Wire stacking module
- Carrier strip chopper
- Wire doubling module
- Applicator shuttle
- Crimp force monitoring
- Cable quality monitoring
- Conductor quality monitoring

TECHNICAL DATA

Processable materials	
Wire	Single and multi-core wires [1]
	Cross section: 0.08 mm ² – 6 mm ² [1]
	Insulation: Teflon, PVC, etc.
Processing	
Wire feeding	Belt drive with up to 10 m/s
Cut length	30 mm – 99 m [1]
Production rate	> 5.000 pcs/h by 50 mm wire length (Crimp/Crimp) [1]
Performance and geometry	
Drive	Servo motors
Number of stations	4 Stations
Controls	
Software	WireStar
Display	21" Touchscreen
Supplies and interfaces	
Power supply	3x (208-480 V), 50/60 Hz, 3,5 kVA
Compressed air	6 bar
Interfaces	RS232 Ethernet
Dimensions and weight	
Width x Depth x Height	3350 x 1450 x 1800 mm [2]
Weight	1050 kg [2]

[1] Depending on the configuration of wire and terminal.

[2] Approximate indication for basic equipment.

CONTACT US

Schäfer Werkzeug- und Sondermaschinenbau GmbH

Dr.-Alfred-Weckesser-Straße 6
76669 Bad Schönborn
Germany
Phone: +49 7253 9421 0
Fax: +49 7253 9421 94
E-Mail: info@schaefer.biz

FURTHER INFORMATION

WWW.SCHAEFER.BIZ

